

\$105,000 - 14 Riverdale Bend, Whitecourt

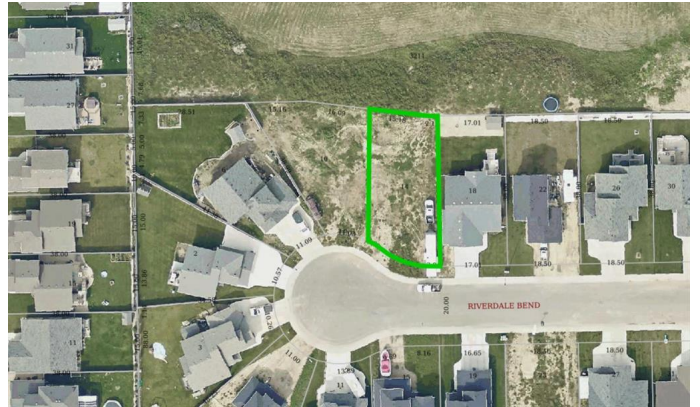
MLS® #A2144372

\$105,000

0 Bedroom, 0.00 Bathroom,
Land on 0.16 Acres

NONE, Whitecourt, Alberta

Residential Lot situated in Whitecourt's newest subdivision of Riverdale Bend ready for you to build your dream home! Any style of home will fit in well on this street! The possibilities are endless... bungalow, two storey, or maybe a 1.5 storey, you can get creative with this one and build your forever home! Currently you have green space behind you and the backyard space in this home is second to none! If you're looking for a lot in town with a great sized backyard, I think we have found your match! Very close to St. Joeseph's School (4-12 Catholic), Percy Baxter (6-8 Public) and St. Mary's (PRE-K -3 Catholic). The baseball diamonds and golf course are also a short drive! Do yourself a favour, and come have a peak at this great blank canvas!



Essential Information

MLS® #	A2144372
Price	\$105,000
Bathrooms	0.00
Acres	0.16
Type	Land
Sub-Type	Residential Land
Status	Active

Community Information

Address	14 Riverdale Bend
Subdivision	NONE

City	Whitecourt
County	Woodlands County
Province	Alberta
Postal Code	T7S 0G4

Additional Information

Date Listed	June 26th, 2024
Days on Market	312
Zoning	R-1C

Listing Details

Listing Office	RE/MAX ADVANTAGE (WHITECOURT)
----------------	-------------------------------

Data is supplied by Pillar 9â„¢ MLSÂ® System. Pillar 9â„¢ is the owner of the copyright in its MLSÂ® System. Data is deemed reliable but is not guaranteed accurate by Pillar 9â„¢. The trademarks MLSÂ®, Multiple Listing ServiceÂ® and the associated logos are owned by The Canadian Real Estate Association (CREA) and identify the quality of services provided by real estate professionals who are members of CREA. Used under license.