

# \$18 - 210a, 4720 106 Avenue Se, Calgary

MLS® #A2184855

**\$18**

0 Bedroom, 0.00 Bathroom,  
Commercial on 0.00 Acres

East Shepard Industrial, Calgary, Alberta

Excellent leasing opportunity in South Calgary. The building offers a professional first impression for staff and clients, is fully Wheelchair Accessible including Elevator to the second floor, there are skylights in the common area increasing the natural light in the building including in the winter. The building is highly efficient which results in lower operating costs than any comparable building in South Calgary. Complete staging services available for your New Space! Current Spaces are gorgeous but Tenant Improvements available. And let's not forget, Tim Hortons and Subway are 40 seconds away by car, 2-minute walk!

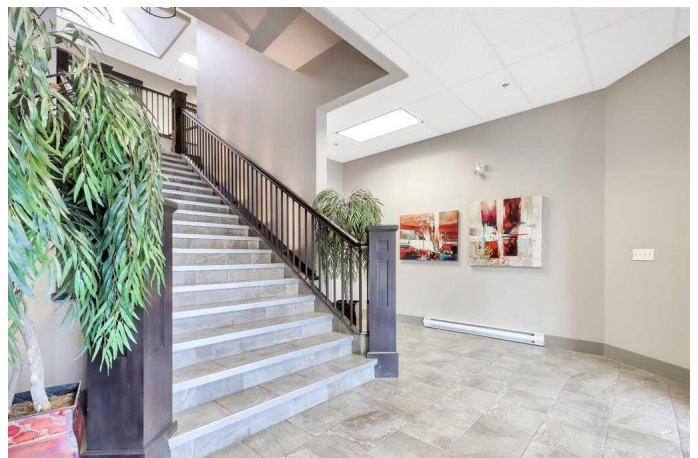
Built in 2014

## Essential Information

MLS® #	A2184855
Price	\$18
Bathrooms	0.00
Acres	0.00
Year Built	2014
Type	Commercial
Sub-Type	Office
Status	Active

## Community Information

Address	210a, 4720 106 Avenue Se
Subdivision	East Shepard Industrial



City	Calgary
County	Calgary
Province	Alberta
Postal Code	T2Z 0G4

### **Interior**

Interior Features	Elevator
-------------------	----------

### **Exterior**

Foundation	Poured Concrete
------------	-----------------

### **Additional Information**

Date Listed	January 3rd, 2025
Days on Market	209
Zoning	I-G

### **Listing Details**

Listing Office	Coldwell Banker Mountain Central
----------------	----------------------------------

Data is supplied by Pillar 9â„¢ MLS® System. Pillar 9â„¢ is the owner of the copyright in its MLS® System. Data is deemed reliable but is not guaranteed accurate by Pillar 9â„¢. The trademarks MLS®, Multiple Listing Service® and the associated logos are owned by The Canadian Real Estate Association (CREA) and identify the quality of services provided by real estate professionals who are members of CREA. Used under license.