

\$19 - 118 1 Avenue W, Cochrane

MLS® #A2196721

\$19

0 Bedroom, 0.00 Bathroom,
Commercial on 1.00 Acres

NONE, Cochrane, Alberta

SHERIDAN MALL BAYS FOR LEASE, Sizes 500 to 1,500 sq. ft. Ground floor and upper floor. Elevator on east side. Stairs on south. 24 hours access. Hallway connects east and west side. Lease base rate \$8.50 upper floor and \$14.00 main floor. Strong tenant base mainly local business. Some bays have bathrooms in the bays. Great exposure to main access coming into Cochrane from Calgary via Highway 1A. Bays 15, 220 and Bay 2 are not available for lease at this time.

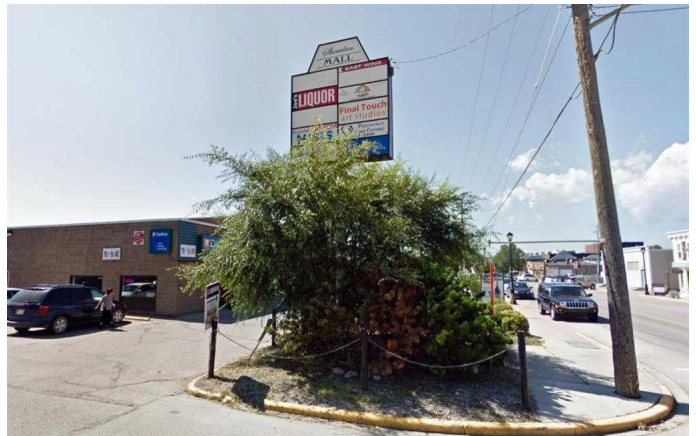
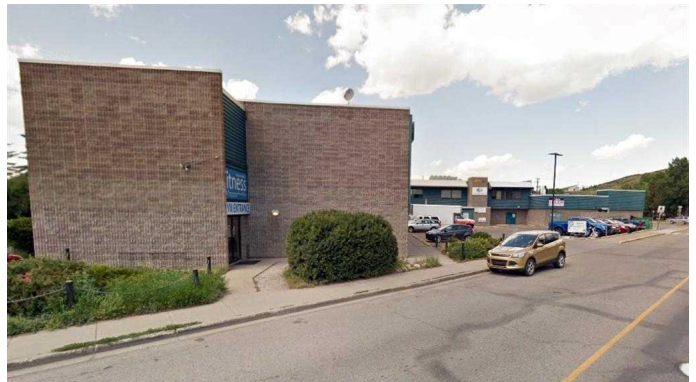
Built in 1975

Essential Information

| | |
|------------|------------|
| MLS® # | A2196721 |
| Price | \$19 |
| Bathrooms | 0.00 |
| Acres | 1.00 |
| Year Built | 1975 |
| Type | Commercial |
| Sub-Type | Mixed Use |
| Status | Active |

Community Information

| | |
|-------------|-------------------|
| Address | 118 1 Avenue W |
| Subdivision | NONE |
| City | Cochrane |
| County | Rocky View County |
| Province | Alberta |
| Postal Code | T4C 2K8 |



Amenities

Parking Spaces 25

Exterior

Lot Description City Lot, Landscaped, Paved, See Remarks
Roof Asphalt
Construction Metal Siding, Wood Frame, Concrete, Mixed
Foundation Poured Concrete

Additional Information

Date Listed February 24th, 2025
Days on Market 160
Zoning Commercial Historical

Listing Details

Listing Office RE/MAX Landan Real Estate

Data is supplied by Pillar 9â„¢ MLS® System. Pillar 9â„¢ is the owner of the copyright in its MLS® System. Data is deemed reliable but is not guaranteed accurate by Pillar 9â„¢. The trademarks MLS®, Multiple Listing Service® and the associated logos are owned by The Canadian Real Estate Association (CREA) and identify the quality of services provided by real estate professionals who are members of CREA. Used under license.