

# \$345,000 - 1402 Edson Drive, Edson

MLS® #A2199603

**\$345,000**

4 Bedroom, 3.00 Bathroom, 1,041 sqft

Residential on 0.01 Acres

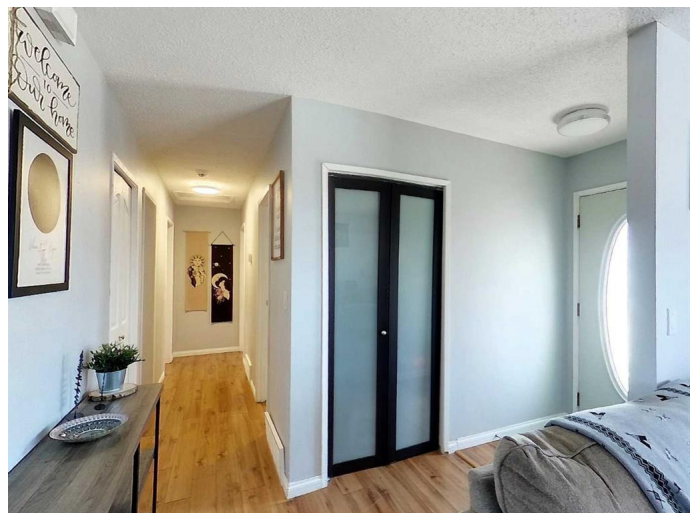
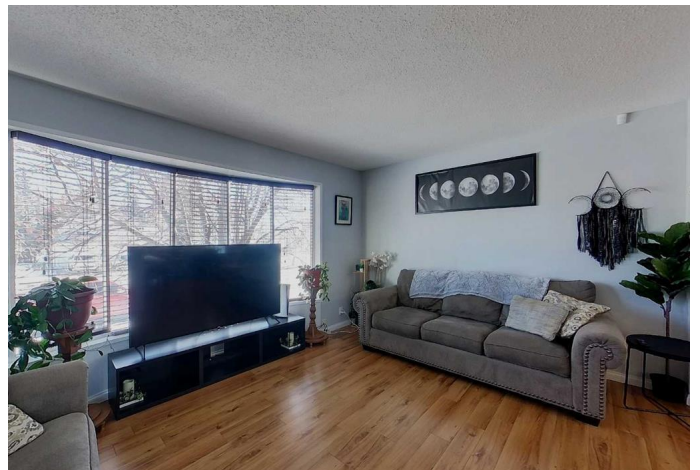
Edson, Edson, Alberta

This family home is the perfect property for you! With 4 bedrooms and 3 bathrooms it has room for everyone. The home has been updated and has a warm, cozy feeling while also being bright and airy. Enjoy a large living room, with access to the dining room and kitchen, 3 of the bedrooms and 2 bathrooms on the main floor. Downstairs has new flooring, paint and windows and boasts a large rec room, the 3rd bathroom, the 4th bedroom and the laundry and utility areas. The fully fenced yard is perfect for kids and animals to play and the large deck is ready to host friends and family. Back alley accesses the paved parking pad and there is a shed for outdoor storage. Close to schools, parks and the rec center it is a great option as your new home!

Built in 1979

## Essential Information

MLS® #	A2199603
Price	\$345,000
Bedrooms	4
Bathrooms	3.00
Full Baths	2
Half Baths	1
Square Footage	1,041
Acres	0.01
Year Built	1979
Type	Residential



Sub-Type	Detached
Style	Bungalow
Status	Active

### Community Information

Address	1402 Edson Drive
Subdivision	Edson
City	Edson
County	Yellowhead County
Province	Alberta
Postal Code	T7E 1H6

### Amenities

Parking Spaces	2
Parking	Off Street, Parking Pad

### Interior

Interior Features	Storage
Appliances	Dishwasher, Refrigerator, Dryer, Stove(s), Washer, Window Coverings
Heating	Forced Air, Natural Gas
Cooling	None
Has Basement	Yes
Basement	Full, Finished

### Exterior

Exterior Features	Private Yard, Storage
Lot Description	Back Lane, Back Yard, Cleared, Front Yard, Lawn, Landscaped
Roof	Asphalt Shingle
Construction	Wood Frame
Foundation	Poured Concrete

### Additional Information

Date Listed	March 6th, 2025
Days on Market	154
Zoning	R-1B

### Listing Details

Listing Office	ROYAL LEPAGE EDSON REAL ESTATE
----------------	--------------------------------

Data is supplied by Pillar 9â„¢ MLS® System. Pillar 9â„¢ is the owner of the copyright in its MLS® System. Data is deemed reliable but is not guaranteed accurate by Pillar 9â„¢. The trademarks MLS®, Multiple Listing Service® and

the associated logos are owned by The Canadian Real Estate Association (CREA) and identify the quality of services provided by real estate professionals who are members of CREA. Used under license.