

\$369,900 - 9, 191041 Twp Rd 93, Rural Lethbridge County

MLS® #A2200369

\$369,900

0 Bedroom, 0.00 Bathroom,
Land on 2.00 Acres

NONE, Rural Lethbridge County, Alberta

One of just a handful of lots with frontage on Stafford Lake! This 2 acre lot is the perfect place for a weekend getaway or for your full time residence. Located only 20 minutes from Lethbridge or Taber, you are close enough to head to the lake after work! Bring your builder and build your dream home on the lake!

Essential Information

| | |
|-----------|------------------|
| MLS® # | A2200369 |
| Price | \$369,900 |
| Bathrooms | 0.00 |
| Acres | 2.00 |
| Type | Land |
| Sub-Type | Residential Land |
| Status | Active |

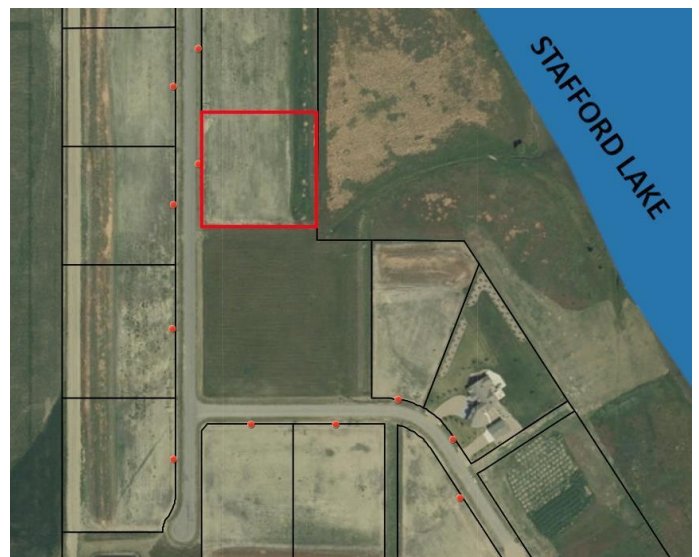
Community Information

| | |
|-------------|-------------------------|
| Address | 9, 191041 Twp Rd 93 |
| Subdivision | NONE |
| City | Rural Lethbridge County |
| County | Lethbridge County |
| Province | Alberta |
| Postal Code | T0K 0R0 |

Amenities

| | |
|-----------|-------|
| Amenities | Other |
|-----------|-------|

Additional Information



| | |
|----------------|---------------------------|
| Date Listed | March 7th, 2025 |
| Days on Market | 167 |
| Zoning | GROUPED COUNTRY RESIDENTI |

Listing Details

| | |
|----------------|---------------------------------|
| Listing Office | Parry Williams Real Estate Ltd. |
|----------------|---------------------------------|

Data is supplied by Pillar 9â„¢ MLS® System. Pillar 9â„¢ is the owner of the copyright in its MLS® System. Data is deemed reliable but is not guaranteed accurate by Pillar 9â„¢. The trademarks MLS®, Multiple Listing Service® and the associated logos are owned by The Canadian Real Estate Association (CREA) and identify the quality of services provided by real estate professionals who are members of CREA. Used under license.