

# \$980 - 207, 5208 46 Avenue, Vermilion

MLS® #A2203295

## \$980

0 Bedroom, 0.00 Bathroom,  
Commercial on 0.00 Acres

Vermilion, Vermilion, Alberta

Turn-Key Office Space for Lease â€” Prime  
Vermilion Location

Move-in ready 455 sq. ft. office space  
available for lease in Prairie Place, located at  
the busiest intersection in Vermilion. This  
professional space with lots of natural light is  
ideal for a satellite office, startup, or growing or  
downsizing business, offering a fully furnished  
setup with two private offices and a storage  
closet.

Key features:

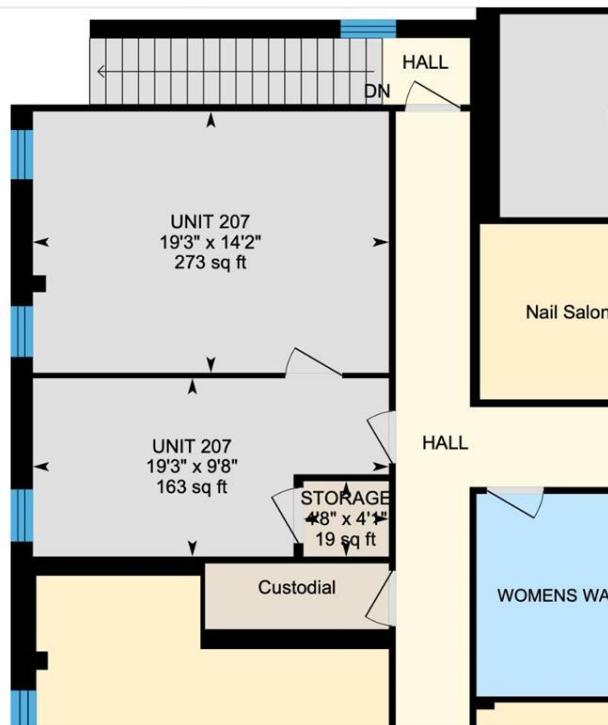
- \*All utilities included â€” predictable monthly costs
- \*Ample parking â€” convenient access for clients and staff
- \*Elevator access â€” fully accessible building
- \*Mail service â€” professional business address
- \*Conference room access â€” included for meetings and collaboration

This office solution provides a professional setting with everything you need to get started. Available May 1st. Donâ€™t miss this opportunityâ€”contact us today for more details or to schedule a viewing!

Built in 2010

## Essential Information

MLS® #                   A2203295  
Price                     \$980



Bathrooms	0.00
Acres	0.00
Year Built	2010
Type	Commercial
Sub-Type	Mixed Use
Status	Active

### **Community Information**

Address	207, 5208 46 Avenue
Subdivision	Vermilion
City	Vermilion
County	Vermilion River, County of
Province	Alberta
Postal Code	T9X 1X8

### **Additional Information**

Date Listed	March 18th, 2025
Days on Market	140

### **Listing Details**

Listing Office	RE/MAX PRAIRIE REALTY
----------------	-----------------------

Data is supplied by Pillar 9â„¢ MLSÂ® System. Pillar 9â„¢ is the owner of the copyright in its MLSÂ® System. Data is deemed reliable but is not guaranteed accurate by Pillar 9â„¢. The trademarks MLSÂ®, Multiple Listing ServiceÂ® and the associated logos are owned by The Canadian Real Estate Association (CREA) and identify the quality of services provided by real estate professionals who are members of CREA. Used under license.