

\$150,000 - 385 W 100 S, Raymond

MLS® #A2206166

\$150,000

0 Bedroom, 0.00 Bathroom,
Land on 0.45 Acres

NONE, Raymond, Alberta

Located on the edge of the town of Raymond, just 20 minutes from Lethbridge, this incredible lot is fully serviced and ready for your next home building project! At almost a half acre, with the back already fenced, and surrounded by fantastic neighbours, this lot offers you a hobby farm feel without all the mowing and outdoor chores that comes with an actual acreage! Don't miss out on your opportunity to build in such a picturesque spot!

Essential Information

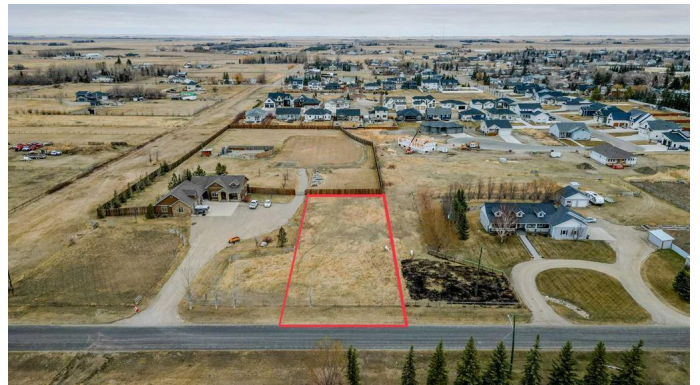
MLS® #	A2206166
Price	\$150,000
Bathrooms	0.00
Acres	0.45
Type	Land
Sub-Type	Residential Land
Status	Active

Community Information

Address	385 W 100 S
Subdivision	NONE
City	Raymond
County	Warner No. 5, County of
Province	Alberta
Postal Code	T0K 2S0

Additional Information

Date Listed	March 29th, 2025
-------------	------------------



Days on Market	39
Zoning	R-1

Listing Details

Listing Office	Grassroots Realty Group
----------------	-------------------------

Data is supplied by Pillar 9â„¢ MLS® System. Pillar 9â„¢ is the owner of the copyright in its MLS® System. Data is deemed reliable but is not guaranteed accurate by Pillar 9â„¢. The trademarks MLS®, Multiple Listing Service® and the associated logos are owned by The Canadian Real Estate Association (CREA) and identify the quality of services provided by real estate professionals who are members of CREA. Used under license.