

# \$1,600 - C, 10601 102 Street, Grande Prairie

MLS® #A2207492

**\$1,600**

2 Bedroom, 1.00 Bathroom, 1,000 sqft

Rental on 0.00 Acres

Avondale., Grande Prairie, Alberta

2 bed 1 bath fourplex unit in South Avondale!  
Upstairs has large living area with access to attached patio. Separate dining area. Full kitchen with dishwasher. Great sized pantry for additional storage.  
Downstairs has both bedrooms and 4 piece bathroom. Separate laundry room.  
Sorry, no pets here. Utilities not Included. \*Unit can come fully furnished and include ALL utilities for an additional \$700/month\*.  
Application required prior to viewing.  
Pictures and 3D of similar unit.

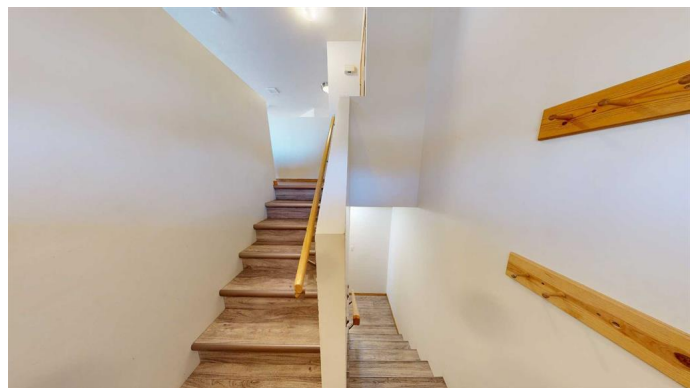


## Essential Information

|                |          |
|----------------|----------|
| MLS® #         | A2207492 |
| Price          | \$1,600  |
| Bedrooms       | 2        |
| Bathrooms      | 1.00     |
| Full Baths     | 1        |
| Square Footage | 1,000    |
| Acres          | 0.00     |
| Type           | Rental   |
| Status         | Active   |

## Community Information

|             |                     |
|-------------|---------------------|
| Address     | C, 10601 102 Street |
| Subdivision | Avondale.           |
| City        | Grande Prairie      |
| County      | Grande Prairie      |
| Province    | Alberta             |



Postal Code T8V2W8

### **Amenities**

Parking Parking Pad

### **Interior**

Appliances Dishwasher, Oven, Range Hood, Refrigerator, Stove(s), Washer/Dryer

### **Exterior**

Roof Asphalt Shingle

### **Additional Information**

Date Listed April 1st, 2025

Days on Market 34

### **Listing Details**

Listing Office Grassroots Realty Group Ltd.

Data is supplied by Pillar 9â„¢ MLS® System. Pillar 9â„¢ is the owner of the copyright in its MLS® System. Data is deemed reliable but is not guaranteed accurate by Pillar 9â„¢. The trademarks MLS®, Multiple Listing Service® and the associated logos are owned by The Canadian Real Estate Association (CREA) and identify the quality of services provided by real estate professionals who are members of CREA. Used under license.