

# \$239,000 - 3, 714040 71 Range Rd, Rural Grande Prairie No. 1, County of

---

MLS® #A2215056

**\$239,000**

0 Bedroom, 0.00 Bathroom,  
Land on 5.75 Acres

NONE, Rural Grande Prairie No. 1, County of,  
Alberta

**VACANT LOT AND IMMEDIATE POSSESSION!!!** This 5.75 acre lot is ready to build on and zoned CR 5 country residential. Enjoy the convenience of being just minutes from Grande Prairie, where youâ€™ll find a variety of amenities to suit your lifestyle. With flexible options for build-to-suit and carrying options available, your vision can become a reality. Donâ€™t miss out on this incredible opportunity to invest in a community.



## Essential Information

MLS® #	A2215056
Price	\$239,000
Bathrooms	0.00
Acres	5.75
Type	Land
Sub-Type	Residential Land
Status	Active

## Community Information

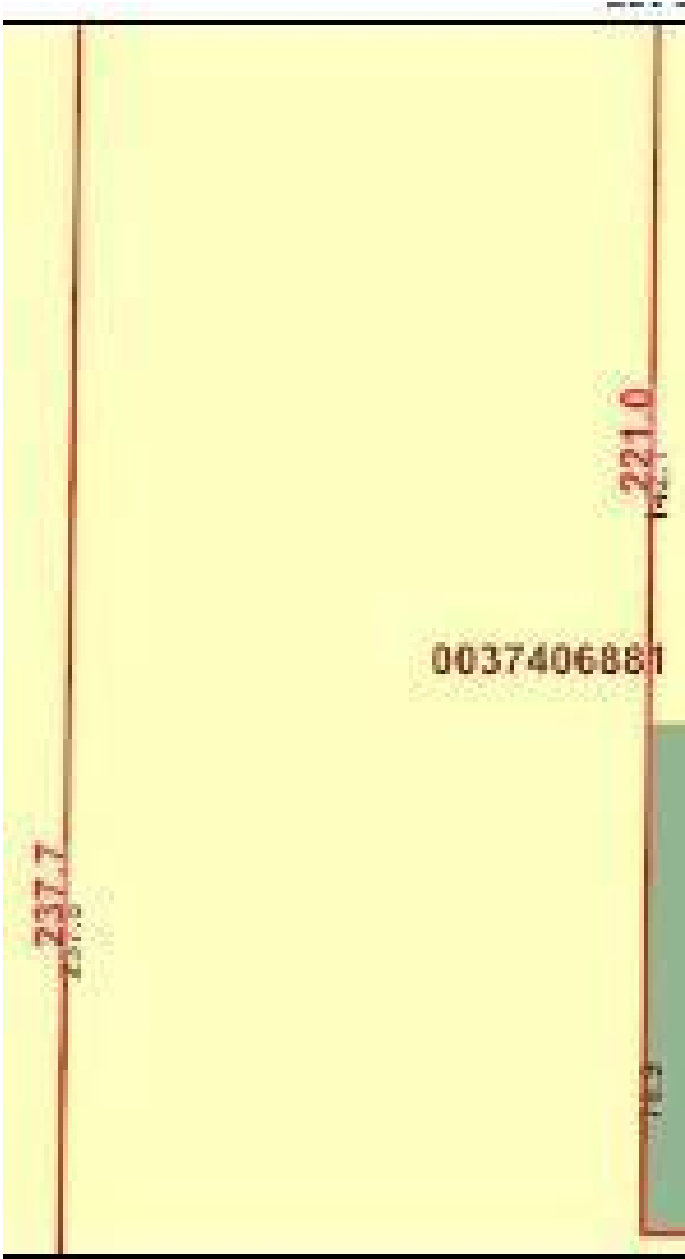
Address	3, 714040 71 Range Rd
Subdivision	NONE
City	Rural Grande Prairie No. 1, County of
County	Grande Prairie No. 1, County of
Province	Alberta
Postal Code	T8W 5J5

**Additional Information**

Date Listed            April 25th, 2025  
Days on Market       117  
Zoning                 CR5

**Listing Details**

Listing Office           RE/MAX Grande Prairie



Data is supplied by Pillar 9â„¢ MLSÂ® System. Pillar 9â„¢ is the owner of the copyright in its MLSÂ® System. Data is deemed reliable but is not guaranteed accurate by Pillar 9â„¢. The trademarks MLSÂ®, Multiple Listing ServiceÂ® and the associated logos are owned by The Canadian Real Estate Association (CREA) and identify the quality of services provided by real estate professionals who are members of CREA. Used under license.