

\$429,900 - 6334 Poplar Drive, Grande Prairie

MLS® #A2217522

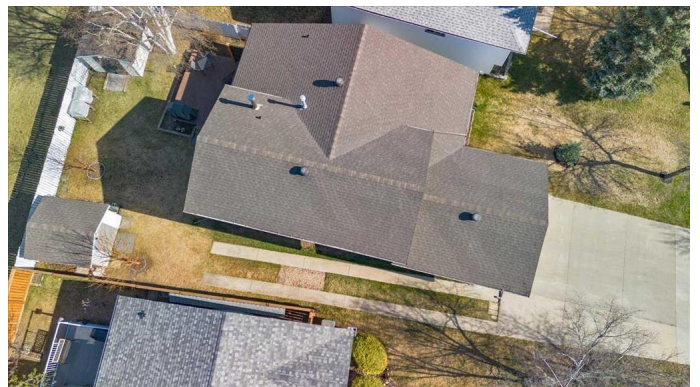
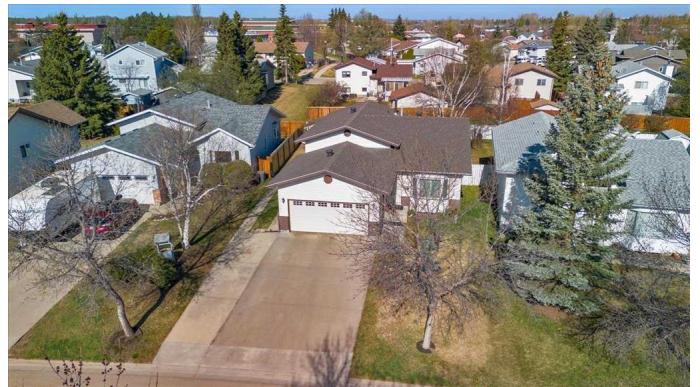
\$429,900

4 Bedroom, 3.00 Bathroom, 1,452 sqft

Residential on 0.14 Acres

Country Club Estates., Grande Prairie, Alberta

Beautifully maintained home on a large lot in Country Club Estates close to 2 schools, walking trails and parks. This 1452 sq. ft. split level is fully developed on all levels. Many big-ticket items completed in recent years including all new windows, newer roof on the home and both sheds, newer hot water tank and completely renovated kitchen. The main floor features an inviting front entry, a sunken living room with vaulted ceiling and bay window overlooking the front yard. The tastefully updated kitchen features new cabinets and countertops, tile backsplash, island and pantry with pull out shelves. Two dining options to chose from. A dining area off the kitchen with large windows and access to the backyard, the second option off the living room which can also be used as a cozy reading nook. The upper level is complete with a main bathroom and 3 generous bedrooms including the primary with walk-in in closet and 3 piece ensuite. The third level offers a second living room with wood burning fireplace, 3-piece bathroom, laundry room and fourth bedroom. The Fourth level nice and bright and set up as a rec room. The utility room is large and offers plenty of storage. Enjoy the evening sun on your maintenance free deck. The backyard has 2 sheds, mature trees and backs onto an easement for extra space between neighbours. Other notable features include plenty of parking including RV parking along the south side, reverse osmosis and attached double car garage which is



insulated, boarded and has a high ceiling.
This home is sure to impress and the pride of ownership is evident the moment you step inside. Book a showing and see for yourself.

Built in 1986

Essential Information

MLS® #	A2217522
Price	\$429,900
Bedrooms	4
Bathrooms	3.00
Full Baths	3
Square Footage	1,452
Acres	0.14
Year Built	1986
Type	Residential
Sub-Type	Detached
Style	4 Level Split
Status	Active

Community Information

Address	6334 Poplar Drive
Subdivision	Country Club Estates.
City	Grande Prairie
County	Grande Prairie
Province	Alberta
Postal Code	T8W 2G3

Amenities

Parking Spaces	6
Parking	Additional Parking, Concrete Driveway, Double Garage Attached
# of Garages	2

Interior

Interior Features	Central Vacuum, High Ceilings, Kitchen Island, Vaulted Ceiling(s)
Appliances	Dishwasher, Gas Stove, Refrigerator, Washer/Dryer, Window Coverings
Heating	Forced Air
Cooling	None

Fireplace	Yes
# of Fireplaces	1
Fireplaces	Wood Burning
Has Basement	Yes
Basement	Finished, Full

Exterior

Exterior Features	None
Lot Description	Back Yard, Front Yard, Landscaped
Roof	Asphalt Shingle
Construction	Brick, Vinyl Siding
Foundation	Poured Concrete

Additional Information

Date Listed	May 5th, 2025
Days on Market	7
Zoning	RG

Listing Details

Listing Office	Royal LePage - The Realty Group
----------------	---------------------------------

Data is supplied by Pillar 9â„¢ MLS® System. Pillar 9â„¢ is the owner of the copyright in its MLS® System. Data is deemed reliable but is not guaranteed accurate by Pillar 9â„¢. The trademarks MLS®, Multiple Listing Service® and the associated logos are owned by The Canadian Real Estate Association (CREA) and identify the quality of services provided by real estate professionals who are members of CREA. Used under license.