

# \$369,900 - 217 Haru Moriyama Place N, Lethbridge

MLS® #A2217955

**\$369,900**

4 Bedroom, 2.00 Bathroom, 748 sqft

Residential on 0.07 Acres

Legacy Ridge / Hardieville, Lethbridge, Alberta

Great location and perfect place to start or downsize! This cozy home is move in ready offering an open floor plan, vaulted ceilings, 4 bedrooms and 2 bathrooms. Updates include new paint, hot water tank is 2 years old. Newer appliances including microwave, dishwasher and washer/dryer. Outside enjoy the spacious yard, lower patio or a privacy wall lets you appreciate the fresh air while sitting on your deck.

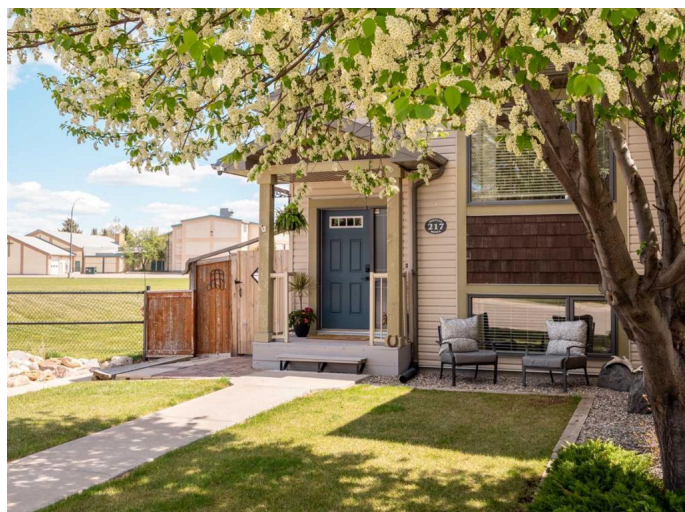
Built in 2009

## Essential Information

MLS® #	A2217955
Price	\$369,900
Bedrooms	4
Bathrooms	2.00
Full Baths	2
Square Footage	748
Acres	0.07
Year Built	2009
Type	Residential
Sub-Type	Semi Detached
Style	Side by Side, Bi-Level
Status	Active

## Community Information

Address	217 Haru Moriyama Place N
Subdivision	Legacy Ridge / Hardieville



City	Lethbridge
County	Lethbridge
Province	Alberta
Postal Code	T1H 5W4

### **Amenities**

Parking Spaces	2
Parking	None

### **Interior**

Interior Features	Ceiling Fan(s), Pantry
Appliances	Dishwasher, Electric Stove, Refrigerator, Washer/Dryer
Heating	Forced Air
Cooling	Central Air
Has Basement	Yes
Basement	Finished, Full

### **Exterior**

Exterior Features	Other
Lot Description	Back Yard, Corner Lot, Many Trees
Roof	Asphalt Shingle
Construction	Concrete, Vinyl Siding
Foundation	Poured Concrete

### **Additional Information**

Date Listed	May 6th, 2025
Days on Market	2
Zoning	R-50

### **Listing Details**

Listing Office	Grassroots Realty Group
----------------	-------------------------

Data is supplied by Pillar 9â„¢ MLS® System. Pillar 9â„¢ is the owner of the copyright in its MLS® System. Data is deemed reliable but is not guaranteed accurate by Pillar 9â„¢. The trademarks MLS®, Multiple Listing Service® and the associated logos are owned by The Canadian Real Estate Association (CREA) and identify the quality of services provided by real estate professionals who are members of CREA. Used under license.