

# \$139,000 - 408, 105 1945 Street Nw, Edmonton

MLS® #A2218486

**\$139,000**

2 Bedroom, 1.00 Bathroom, 850 sqft

Residential on 0.00 Acres

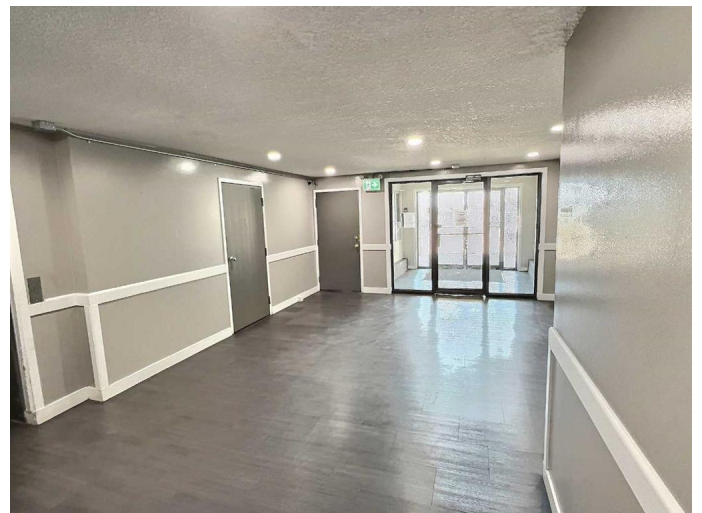
Keheewin, Edmonton, Alberta

Best Location, Brand New Vinyl Floor, Brand new Kitchen Cabinets. Brand new taps & sink in the kitchen. quartz Counter top. Updated Bathroom. Beautiful bright and modern two bedroom suite on the top floor in the heart of the Keehewin community area. Storage & laundry room inside the Condo. Huge living room with outdoor balcony. Two good size bedrooms with one full bathroom. The building is very well maintained with an elevator and assigned parking space. Walking distance to schools, close to LRT, and bus terminal. Also close to grocery, stores, banks, restaurants, and other amenities near by. Why rent when you can own your own, at a great price!

Built in 1981

## Essential Information

MLS® #	A2218486
Price	\$139,000
Bedrooms	2
Bathrooms	1.00
Full Baths	1
Square Footage	850
Acres	0.00
Year Built	1981
Type	Residential
Sub-Type	Apartment
Style	Single Level Unit
Status	Active



## Community Information

Address	408, 105 1945 Street Nw
Subdivision	Keheewin
City	Edmonton
County	Edmonton
Province	Alberta
Postal Code	T6J 5N6

## Amenities

Amenities	Elevator(s), Parking, Snow Removal, Trash
Parking Spaces	1
Parking	Asphalt, Stall

## Interior

Interior Features	Ceiling Fan(s), Elevator, Laminate Counters
Appliances	Electric Stove, Refrigerator, Window Coverings
Heating	Forced Air, Natural Gas
Cooling	None
# of Stories	4

## Exterior

Exterior Features	Balcony
Construction	Vinyl Siding, Wood Siding
Foundation	Poured Concrete

## Additional Information

Date Listed	May 7th, 2025
Days on Market	50
Zoning	RM H16

## Listing Details

Listing Office	Century 21 Gillany Realty
----------------	---------------------------

Data is supplied by Pillar 9â„¢ MLS® System. Pillar 9â„¢ is the owner of the copyright in its MLS® System. Data is deemed reliable but is not guaranteed accurate by Pillar 9â„¢. The trademarks MLS®, Multiple Listing Service® and the associated logos are owned by The Canadian Real Estate Association (CREA) and identify the quality of services provided by real estate professionals who are members of CREA. Used under license.