

\$3,000 - Bay 2, 4635 Federated Road, Swan Hills

MLS® #A2219227

\$3,000

0 Bedroom, 0.00 Bathroom,
Commercial on 0.00 Acres

NONE, Swan Hills, Alberta

THIS LOCATION IS PERFECT FOR A COMMERCIAL OR BUSINESS RIGHT OFF THE HIGHWAY. 3800 SQ FT SHOP & OFFICE COMPLEX WITH A 1300 SQ FT MEZZANINE AND HAS 14 FT. OVERHEAD DOORS AND COMES WITH A LARGE COMPRESSOR. ESSO SERVICE STATION IS LOCATED BESIDE THIS LOT THAT CREATES A GOOD TRAFFIC STOP.

Built in 1988

Essential Information

MLS® #	A2219227
Price	\$3,000
Bathrooms	0.00
Acres	0.00
Year Built	1988
Type	Commercial
Sub-Type	Mixed Use
Status	Active

Community Information

Address	Bay 2, 4635 Federated Road
Subdivision	NONE
City	Swan Hills
County	Big Lakes County
Province	Alberta
Postal Code	T7N 2C0

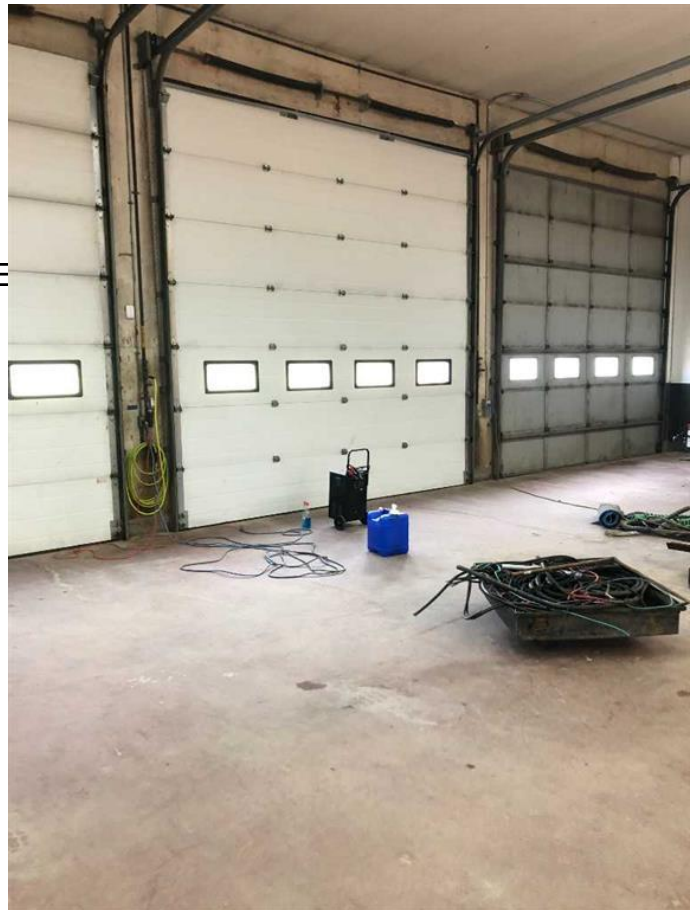
Additional Information



Date Listed May 8th, 2025
Days on Market 50
Zoning COMMERCIAL

Listing Details

Listing Office RE/MAX ADVANTAGE (WHITE)



Data is supplied by Pillar 9â„¢ MLSÂ® System. Pillar 9â„¢ is the owner of the copyright in its MLSÂ® System. Data is deemed reliable but is not guaranteed accurate by Pillar 9â„¢. The trademarks MLSÂ®, Multiple Listing ServiceÂ® and the associated logos are owned by The Canadian Real Estate Association (CREA) and identify the quality of services provided by real estate professionals who are members of CREA. Used under license.

