

# \$529,900 - 4553 25 Avenue S, Lethbridge

MLS® #A2219488

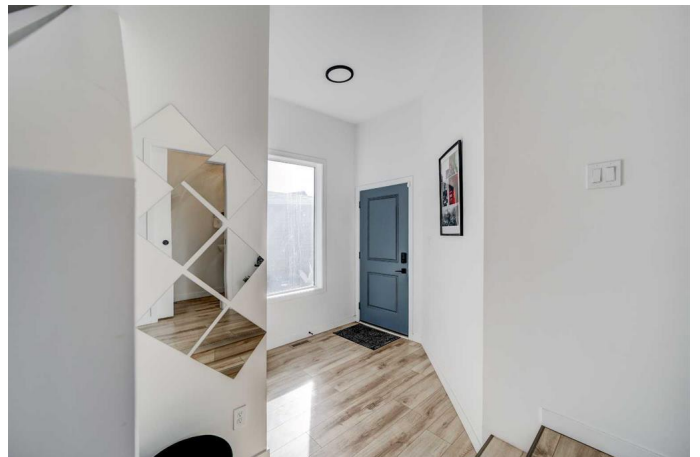
**\$529,900**

5 Bedroom, 4.00 Bathroom, 1,634 sqft

Residential on 0.09 Acres

Discovery, Lethbridge, Alberta

This like-new Avonlea two-story home is move-in ready and packed with features. With 5 bedrooms, 4 bathrooms, an office/den, and a massive bonus room, this property offers incredible flexibility. Both the office and bonus room could easily be converted into bedrooms, creating a potential 7-bedroom home. It also features central air conditioning and a beautifully landscaped, fenced backyardâ€”perfect for families or entertaining. The walk-through pantry is conveniently located just off the garage, making it easy to unload groceries. The main level boasts an open floor plan, seamlessly connecting the spacious living, dining, and kitchen areas. The kitchen offers a central island, stainless steel appliances, and plenty of cabinet space, while a powder room completes this level. Upstairs, youâ€™ll find the primary suite with its own ensuite bathroom and walk-in closet. The massive bonus room provides endless possibilitiesâ€”it could be used as a media room, playroom, or easily converted into an additional bedroom. This level also features two more bedrooms, a spacious 4-piece bathroom, and a conveniently located laundry room. The fully finished basement offers two more bedrooms, another 4-piece bathroom, a second laundry setup (the sellers intend to take the current basement laundry machines, but this is negotiable), and a versatile office/den that could easily function as a bedroom. The lower level provides excellent flexibility for a growing family or the potential



for rental income to help with the mortgage. The fenced backyard is beautifully landscaped, offering plenty of space for children, pets, or outdoor gatherings. Located in Southbrook, an architecturally controlled community, this home is close to parks, playgrounds, schools, and all the amenities on the south side of Lethbridge. This property also comes with a transferable 10-year new home warranty, offering peace of mind for years to come. With nothing left to do, this stunning home is completely move-in ready. Contact your REALTOR® today to schedule a private viewing!

Built in 2022

**Essential Information**

MLS® #	A2219488
Price	\$529,900
Bedrooms	5
Bathrooms	4.00
Full Baths	3
Half Baths	1
Square Footage	1,634
Acres	0.09
Year Built	2022
Type	Residential
Sub-Type	Detached
Style	2 Storey
Status	Active

**Community Information**

Address	4553 25 Avenue S
Subdivision	Discovery
City	Lethbridge
County	Lethbridge
Province	Alberta
Postal Code	T1K 8K5

**Amenities**

Parking Spaces	4
Parking	Double Garage Attached, Driveway
# of Garages	2

## Interior

Interior Features	Kitchen Island, Pantry, Walk-In Closet(s)
Appliances	Central Air Conditioner, Dishwasher, Electric Stove, Garage Control(s), Microwave, Range Hood, Refrigerator, Washer/Dryer, Window Coverings
Heating	Forced Air
Cooling	Central Air
Has Basement	Yes
Basement	Finished, Full

## Exterior

Exterior Features	Private Yard
Lot Description	Cul-De-Sac
Roof	Asphalt Shingle
Construction	Concrete, Vinyl Siding, Wood Frame
Foundation	Poured Concrete

## Additional Information

Date Listed	May 9th, 2025
Days on Market	24
Zoning	R-CL

## Listing Details

Listing Office	Century 21 Foothills South Real Estate
----------------	--

Data is supplied by Pillar 9â„¢ MLS® System. Pillar 9â„¢ is the owner of the copyright in its MLS® System. Data is deemed reliable but is not guaranteed accurate by Pillar 9â„¢. The trademarks MLS®, Multiple Listing Service® and the associated logos are owned by The Canadian Real Estate Association (CREA) and identify the quality of services provided by real estate professionals who are members of CREA. Used under license.