

\$469,000 - 175048 100 Twp Road, Rural Taber, M.D. of

MLS® #A2220770

\$469,000

3 Bedroom, 2.00 Bathroom, 1,466 sqft
Residential on 1.53 Acres

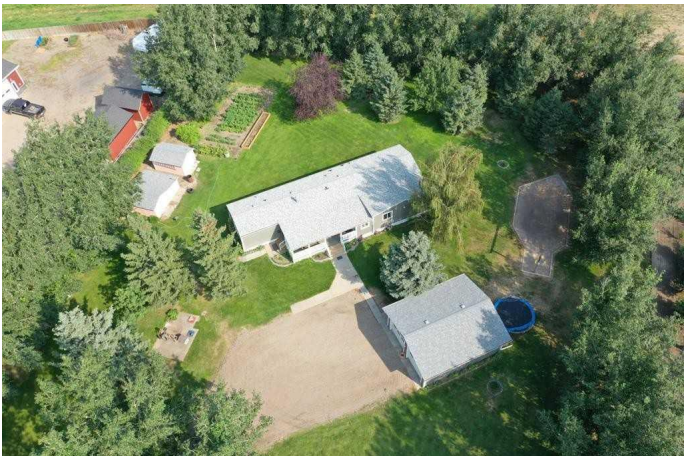
NONE, Rural Taber, M.D. of, Alberta

Located west of Taber you'll find peace and quiet on this 1.5 acre parcel. This home features 3 bedrooms, 1.5 bathrooms and a large dining room for family dinners. It's been well cared for and has a new furnace and A/C installed in 2023. There are pvc windows, shingles are 2018, the kitchen has been updated, the bathroom renovated and the detached double garage is wired with 220 amp service. There's also a large garden area, sheds for storage and irrigation water for the yard. Imagine driving up the tree lined driveway to your new home.

Built in 1994

Essential Information

MLS® #	A2220770
Price	\$469,000
Bedrooms	3
Bathrooms	2.00
Full Baths	1
Half Baths	1
Square Footage	1,466
Acres	1.53
Year Built	1994
Type	Residential
Sub-Type	Detached
Style	Acreage with Residence, Bungalow
Status	Active



Community Information

Address	175048 100 Twp Road
Subdivision	NONE
City	Rural Taber, M.D. of
County	Taber, M.D. of
Province	Alberta
Postal Code	T0K 0B0

Amenities

Parking	Double Garage Detached
# of Garages	2

Interior

Interior Features	See Remarks
Appliances	See Remarks
Heating	Forced Air
Cooling	Central Air
Basement	None

Exterior

Exterior Features	Private Yard
Lot Description	Garden, Lawn, Many Trees, Private
Roof	Asphalt Shingle
Construction	Wood Siding
Foundation	See Remarks

Additional Information

Date Listed	May 13th, 2025
Days on Market	8
Zoning	CR

Listing Details

Listing Office	RE/MAX REAL ESTATE - LETHBRIDGE (TABER)
----------------	---

Data is supplied by Pillar 9â„¢ MLS® System. Pillar 9â„¢ is the owner of the copyright in its MLS® System. Data is deemed reliable but is not guaranteed accurate by Pillar 9â„¢. The trademarks MLS®, Multiple Listing Service® and the associated logos are owned by The Canadian Real Estate Association (CREA) and identify the quality of services provided by real estate professionals who are members of CREA. Used under license.