

\$249,900 - 118, 71332 Range Road 262, Ridgevalley

MLS® #A2226415

\$249,900

4 Bedroom, 2.00 Bathroom, 988 sqft

Residential on 0.18 Acres

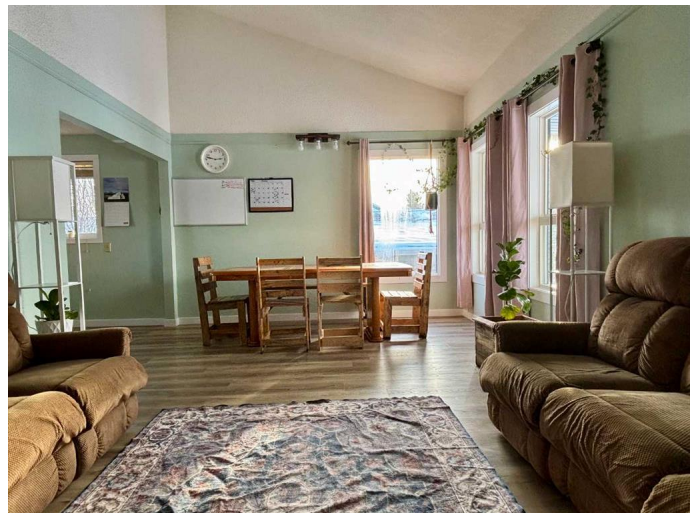
NONE, Ridgevalley, Alberta

Located in the quiet and cozy community of Ridgevalley this bright, updated home is ready for new owners. With numerous upgrades in recent years including new flooring throughout, fresh trim and paint upstairs, and brand-new stainless-steel kitchen appliances, you can move in and enjoy. This house would be an excellent family home or a spot for someone looking to downsize off the farm or acreage. It has 2 bedrooms and a full bathroom on the main level as well as an additional 2 bedrooms and three piece bath in the basement. Outside there is a large parking pad in the front and a second gravel parking pad off the rear alley too. In the fenced rear yard you will find numerous trees as well as lots of room to play and 2 storage sheds. With very few housing options in the area this is one home you will want to see before it's gone!

Built in 1982

Essential Information

| | |
|----------------|-----------|
| MLS® # | A2226415 |
| Price | \$249,900 |
| Bedrooms | 4 |
| Bathrooms | 2.00 |
| Full Baths | 2 |
| Square Footage | 988 |
| Acres | 0.18 |
| Year Built | 1982 |



| | |
|----------|-------------|
| Type | Residential |
| Sub-Type | Detached |
| Style | Bi-Level |
| Status | Active |

Community Information

| | |
|-------------|---------------------------|
| Address | 118, 71332 Range Road 262 |
| Subdivision | NONE |
| City | Ridgevalley |
| County | Greenview No. 16, M.D. of |
| Province | Alberta |
| Postal Code | T0H 0H0 |

Amenities

| | |
|----------------|-------------|
| Parking Spaces | 4 |
| Parking | Parking Pad |

Interior

| | |
|-------------------|--|
| Interior Features | Vaulted Ceiling(s) |
| Appliances | Dishwasher, Electric Range, Refrigerator, Washer/Dryer |
| Heating | Forced Air, Natural Gas |
| Cooling | None |
| Fireplace | Yes |
| # of Fireplaces | 1 |
| Fireplaces | Gas |
| Has Basement | Yes |
| Basement | Finished, Full |

Exterior

| | |
|-------------------|---|
| Exterior Features | Private Yard |
| Lot Description | Back Lane, Back Yard, City Lot, Landscaped, Lawn, Many Trees, Rectangular Lot |
| Roof | Asphalt Shingle |
| Construction | Wood Frame |
| Foundation | Wood |

Additional Information

| | |
|----------------|----------------|
| Date Listed | May 30th, 2025 |
| Days on Market | 42 |

Zoning

HR

Listing Details

Listing Office

Royal LePage - The Realty Group

Data is supplied by Pillar 9â„¢ MLS® System. Pillar 9â„¢ is the owner of the copyright in its MLS® System. Data is deemed reliable but is not guaranteed accurate by Pillar 9â„¢. The trademarks MLS®, Multiple Listing Service® and the associated logos are owned by The Canadian Real Estate Association (CREA) and identify the quality of services provided by real estate professionals who are members of CREA. Used under license.