

# \$750,000 - 2705 Scenic Drive S, Lethbridge

MLS® #A2228272

## \$750,000

0 Bedroom, 0.00 Bathroom, 1,775 sqft

Multi-Family on 0.00 Acres

Agnes Davidson, Lethbridge, Alberta

ATTENTION INVESTORS!!! This is a well kept 4 plex in a PRIME location. 3 - 2 bedroom suites, and 1 - 1 bedroom. All fully rented. Single detached garage in the rear. Parking stalls in the rear. Underground sprinklers.

Built in 1968

### Essential Information

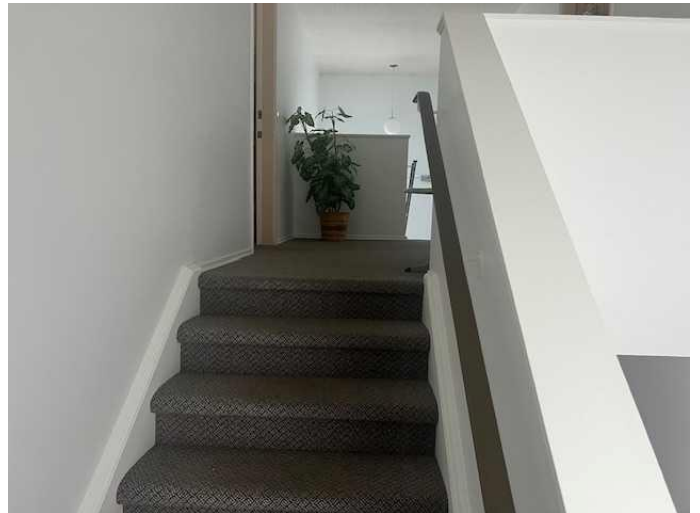
MLS® #	A2228272
Price	\$750,000
Bathrooms	0.00
Square Footage	1,775
Acres	0.00
Year Built	1968
Type	Multi-Family
Sub-Type	4 plex
Status	Active

### Community Information

Address	2705 Scenic Drive S
Subdivision	Agnes Davidson
City	Lethbridge
County	Lethbridge
Province	Alberta
Postal Code	T1K 1N3

### Amenities

Parking Spaces	8
----------------	---



Parking	Alley Access, Parking Lot, Single Garage Detached
# of Garages	1

### Interior

Appliances	Dryer, Refrigerator, Stove(s), Washer
------------	---------------------------------------

### Exterior

Roof	Asphalt Shingle
------	-----------------

### Additional Information

Date Listed	June 5th, 2025
-------------	----------------

Days on Market	16
----------------	----

Zoning	RES-MF
--------	--------

### Listing Details

Listing Office	Lethbridge Real Estate.com
----------------	----------------------------

Data is supplied by Pillar 9â„¢ MLSÂ® System. Pillar 9â„¢ is the owner of the copyright in its MLSÂ® System. Data is deemed reliable but is not guaranteed accurate by Pillar 9â„¢. The trademarks MLSÂ®, Multiple Listing ServiceÂ® and the associated logos are owned by The Canadian Real Estate Association (CREA) and identify the quality of services provided by real estate professionals who are members of CREA. Used under license.