

\$287,900 - 87 3 Street, Lashburn

MLS® #A2229136

\$287,900

4 Bedroom, 3.00 Bathroom, 1,500 sqft

Residential on 0.20 Acres

NONE, Lashburn, Saskatchewan

Spacious 3 level split home with a double attached garage. This place is located in Lashburn, and has had new flooring throughout the main floor. The bright kitchen with and island has lots of counter space, you also have main floor laundry with access to the garage. There are 2 bedrooms on the upper level and 2 bedroom on the lower level. The lower level family room has a gas fireplace. The backyard has a garden area . with a large deck the a covered area for bbqing and fenced for dogs come and have a look.

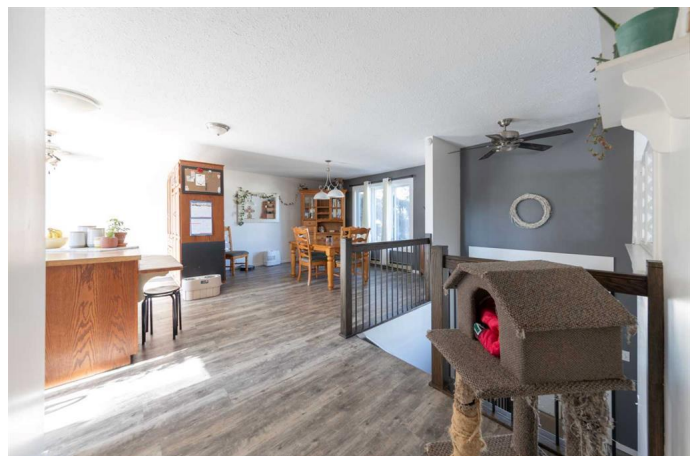
Built in 1979

Essential Information

MLS® #	A2229136
Price	\$287,900
Bedrooms	4
Bathrooms	3.00
Full Baths	3
Square Footage	1,500
Acres	0.20
Year Built	1979
Type	Residential
Sub-Type	Detached
Style	3 Level Split
Status	Active

Community Information

Address 87 3 Street



Subdivision	NONE
City	Lashburn
County	Saskatchewan
Province	Saskatchewan
Postal Code	S0M 1H0

Amenities

Parking Spaces	4
Parking	Double Garage Attached
# of Garages	2

Interior

Interior Features	Double Vanity, Jetted Tub
Appliances	Dishwasher, Refrigerator, Stove(s), Washer/Dryer
Heating	Baseboard, Electric
Cooling	None
Fireplace	Yes
# of Fireplaces	1
Fireplaces	Gas
Has Basement	Yes
Basement	Finished, Full

Exterior

Exterior Features	None
Lot Description	Back Yard, Garden
Roof	Asphalt Shingle
Construction	Wood Frame
Foundation	Poured Concrete

Additional Information

Date Listed	June 8th, 2025
Days on Market	36
Zoning	R1

Listing Details

Listing Office	eXp Realty (Lloyd)
----------------	--------------------

Data is supplied by Pillar 9â„¢ MLS® System. Pillar 9â„¢ is the owner of the copyright in its MLS® System. Data is deemed reliable but is not guaranteed accurate by Pillar 9â„¢. The trademarks MLS®, Multiple Listing Service® and the associated logos are owned by The Canadian Real Estate Association (CREA) and identify the quality of services provided by real estate professionals who are members of CREA. Used under license.