

\$1,700 - 26, 3440 23 Avenue S, Lethbridge

MLS® #A2230517

\$1,700

1 Bedroom, 0.00 Bathroom, 725 sqft

Rental on 0.00 Acres

Agnes Davidson, Lethbridge, Alberta

UTILITIES INCLUDED!!

Spruce Manor Apartment: 26 - 3440 23
Avenue S

- 2 Bed,

- 1 Bath

One of my favorite neighborhoods in
Lethbridge! Only 5 minutes away from the
college in a beautiful area. Two parks
conveniently located within a few blocks.

Commercial amenities are conveniently
located within walking distance.

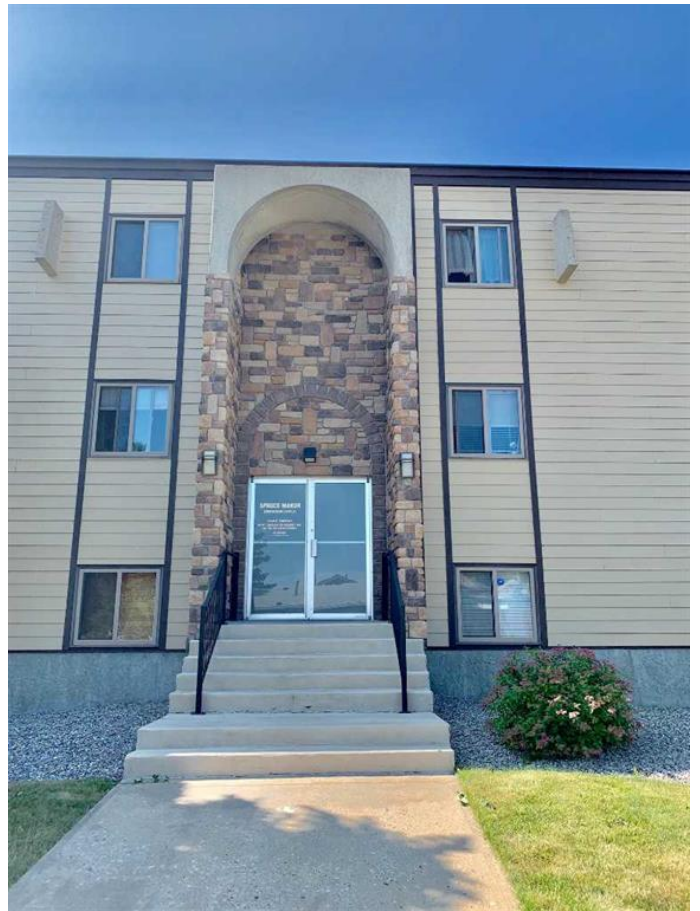
Appliances Include: fridge, stove, hood fan,
and a comfortable shared picnic area between
the two buildings. Beautiful view off the
balcony.

All applicants subject to income verification,
landlord references and credit check.

Built in 1980

Essential Information

MLS® #	A2230517
Price	\$1,700
Bedrooms	1
Bathrooms	0.00
Square Footage	725
Acres	0.00
Year Built	1980
Type	Rental
Status	Active



Community Information

Address 26, 3440 23 Avenue S
Subdivision Agnes Davidson
City Lethbridge
County Lethbridge
Province Alberta
Postal Code T1K 4K4

Amenities

Utilities Electricity Connected, Natural Gas Connected
Parking Spaces 1
Parking Stall

Interior

Appliances Electric Stove, Range Hood,
Heating Central

Exterior

Roof Asphalt Shingle

Additional Information

Date Listed June 12th, 2025
Days on Market 3

Listing Details

Listing Office Braemore Management

Data is supplied by Pillar 9â„¢ MLSÂ® System. Pillar 9â„¢ is the owner of the copyright in its MLSÂ® System. Data is deemed reliable but is not guaranteed accurate by Pillar 9â„¢. The trademarks MLSÂ®, Multiple Listing ServiceÂ® and the associated logos are owned by The Canadian Real Estate Association (CREA) and identify the quality of services provided by real estate professionals who are members of CREA. Used under license.

