

\$747,000 - 302 Prospect Drive Sw, Medicine Hat

MLS® #A2239954

\$747,000

4 Bedroom, 2.00 Bathroom, 1,640 sqft
Residential on 0.22 Acres

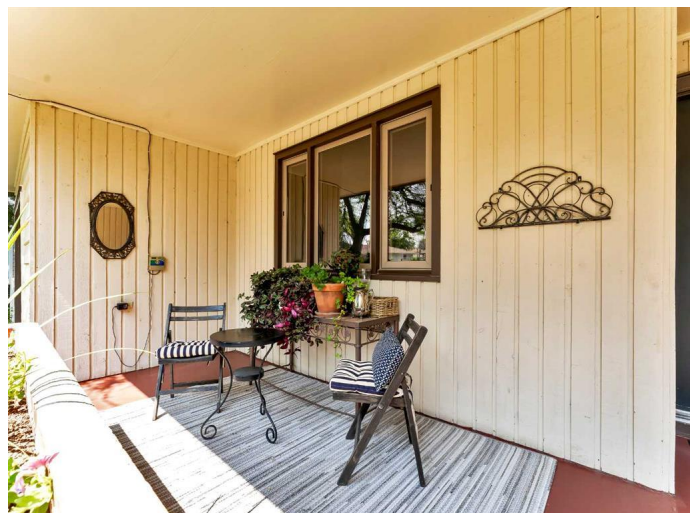
SW Hill, Medicine Hat, Alberta

Charming and beautifully updated 1952 BUNGALOW WITH 9' CEILINGS UP AND DOWN, located in a sought-after area! This 2+2 BEDROOM, 2-BATH home blends character with modern comfort. The bright main floor features HARDWOOD FLOORS, abundant natural light, and a stylish NEWER KITCHEN with a MOVABLE ISLAND and 36" BLUE FLAME GAS STOVE. Downstairs you'll find a COZY KITCHENETTE—perfect for guests or extended family. One bathroom includes a LUXURIOUS HEATED FLOOR. Enjoy the PRIVATE PARK-LIKE BACKYARD, SINGLE GARAGE, and UNBEATABLE ACCESS to the hospital, downtown, and highway. MOVE-IN READY -JUST UNPACK AND ENJOY!

Built in 1952

Essential Information

MLS® #	A2239954
Price	\$747,000
Bedrooms	4
Bathrooms	2.00
Full Baths	2
Square Footage	1,640
Acres	0.22
Year Built	1952
Type	Residential
Sub-Type	Detached



Style Bungalow
Status Active

Community Information

Address 302 Prospect Drive Sw
Subdivision SW Hill
City Medicine Hat
County Medicine Hat
Province Alberta
Postal Code T1A 4B7

Amenities

Parking Spaces 2
Parking Single Garage Attached
of Garages 1

Interior

Interior Features Kitchen Island, Natural Woodwork
Appliances Central Air Conditioner, Dishwasher, Electric Stove, Gas Stove, Refrigerator, Washer/Dryer
Heating Forced Air
Cooling Central Air
Has Basement Yes
Basement Finished, Full

Exterior

Exterior Features Private Yard
Lot Description Back Lane, Back Yard, Corner Lot, Few Trees
Roof Asphalt Shingle
Construction Wood Frame
Foundation Poured Concrete

Additional Information

Date Listed July 15th, 2025
Days on Market 22
Zoning R-LD

Listing Details

Listing Office RE/MAX MEDALTA REAL ESTATE

Data is supplied by Pillar 9â„¸ MLSÂ® System. Pillar 9â„¸ is the owner of the copyright in its MLSÂ® System. Data is deemed reliable but is not guaranteed accurate by Pillar 9â„¸. The trademarks MLSÂ®, Multiple Listing ServiceÂ® and the associated logos are owned by The Canadian Real Estate Association (CREA) and identify the quality of services provided by real estate professionals who are members of CREA. Used under license.