

\$664,000 - 112 West Creek Meadow, Chestermere

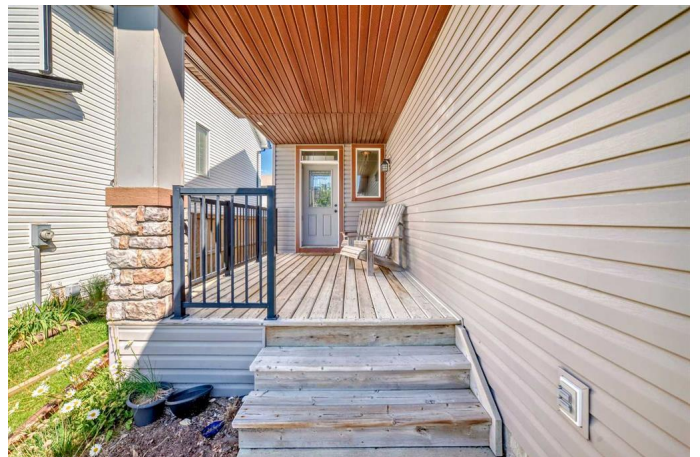
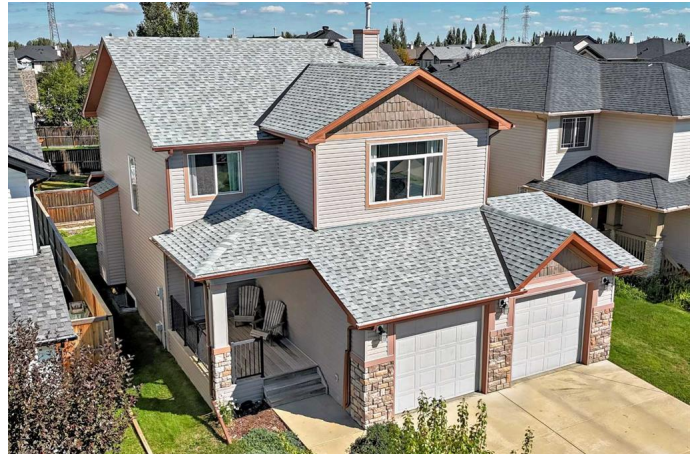
MLS® #A2251488

\$664,000

3 Bedroom, 3.00 Bathroom, 1,943 sqft
Residential on 0.11 Acres

West Creek, Chestermere, Alberta

Come & see this spacious 2 Storey home in the great Chestermere community of West Creek! Main floor flows between kitchen, dining & living room with east facing windows flooding the open concept space with welcomed morning sun. Kitchen connects to the garage via generous walk-through pantry/storage/mud room/ laundry room providing a convenient, step saving, passageway when bringing home a car full of groceries or kids & all their stuff. 2 piece bathroom just off the kitchen. 3 bedrooms, 2 bathrooms & Bonus Room on the second floor. Primary bedroom has a generous sized Walk-in Closet, a roomy 5 piece Ensuite Bathroom with Double Vanity, Soaker Tub & stand alone shower. 4 piece tub/shower bathroom located between the other bedrooms. Bonus room provides top floor options for office space, reading, relaxing, entertainment, hobbies etc. Basement is unfinished with two egress sized windows, roughed in plumbing for bathroom leaving a blank slate for your dream development. Extra Wide Double Garage with 2 doors can easily accommodate your vehicles, work benches, lawn equipment, bikes & gear. Wide concrete driveway allows for even more onsite parking. Covered Front Porch entry extends outside sitting time in all kinds of weather & shelters your incoming visitors & package deliveries. New Shingles(2023). New Hot Water Tank(2024). New Sump Pump(Aug). Schools within steps, shopping within walking distance,



Lake Chestermere within a quick bike ride on the many paths close by. Golf course, recreation center, parks & many more amenities in close proximity.

Built in 2006

Essential Information

| | |
|----------------|-------------|
| MLS® # | A2251488 |
| Price | \$664,000 |
| Bedrooms | 3 |
| Bathrooms | 3.00 |
| Full Baths | 2 |
| Half Baths | 1 |
| Square Footage | 1,943 |
| Acres | 0.11 |
| Year Built | 2006 |
| Type | Residential |
| Sub-Type | Detached |
| Style | 2 Storey |
| Status | Active |

Community Information

| | |
|-------------|-----------------------|
| Address | 112 West Creek Meadow |
| Subdivision | West Creek |
| City | Chestermere |
| County | Chestermere |
| Province | Alberta |
| Postal Code | T1X 1T2 |

Amenities

| | |
|----------------|------------------------|
| Parking Spaces | 4 |
| Parking | Double Garage Attached |
| # of Garages | 2 |

Interior

| | |
|-------------------|---|
| Interior Features | Closet Organizers, High Ceilings, No Animal Home, No Smoking Home, Pantry, Soaking Tub, Sump Pump(s), Walk-In Closet(s) |
| Appliances | Dishwasher, Electric Range, Range Hood, Refrigerator, Washer/Dryer |

| | |
|-----------------|------------------|
| Heating | Forced Air |
| Cooling | None |
| Fireplace | Yes |
| # of Fireplaces | 1 |
| Fireplaces | Gas |
| Has Basement | Yes |
| Basement | Full, Unfinished |

Exterior

| | |
|-------------------|---|
| Exterior Features | Other |
| Lot Description | Back Yard, Front Yard, Lawn, Fruit Trees/Shrub(s) |
| Roof | Asphalt Shingle |
| Construction | Vinyl Siding, Wood Frame |
| Foundation | Poured Concrete |

Additional Information

| | |
|-------------|-------------------|
| Date Listed | August 29th, 2025 |
| Zoning | R-1 |

Listing Details

| | |
|----------------|-----------|
| Listing Office | 2% Realty |
|----------------|-----------|

Data is supplied by Pillar 9â„¢ MLSÂ® System. Pillar 9â„¢ is the owner of the copyright in its MLSÂ® System. Data is deemed reliable but is not guaranteed accurate by Pillar 9â„¢. The trademarks MLSÂ®, Multiple Listing ServiceÂ® and the associated logos are owned by The Canadian Real Estate Association (CREA) and identify the quality of services provided by real estate professionals who are members of CREA. Used under license.