

\$2,575,000 - 11 Spring Ridge Estates, Rural Rocky View County

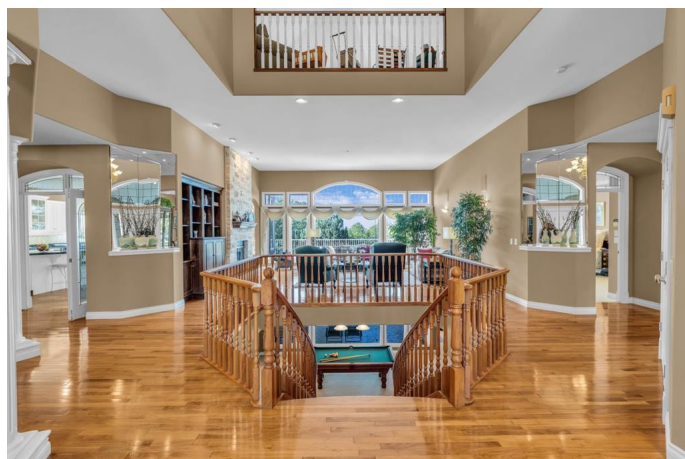
MLS® #A2257341

\$2,575,000

4 Bedroom, 5.00 Bathroom, 3,862 sqft
Residential on 3.81 Acres

Springbank, Rural Rocky View County, Alberta

Welcome to one of Springbank's rarest and most sought-after locations. Perched on the Escarpment Ridge, this extraordinary property offers the perfect blend of mature trees, sweeping mountain views, and exceptional privacy. The 3.81-acre lot is beautifully landscaped with stone pathways, a statement rock garden, a tranquil pond with a waterfall, and a welcoming front courtyard. A charming gazebo with 220 wiring makes the perfect spot for a future hot tub. Car enthusiasts will love the garage capacity with parking for six vehicles, with three attached and three detached bays, all featuring in-floor heating, a workbench, and 220 wiring. The custom walkout bungalow, built with pride by Maillot Homes, offers over 3862 sq ft on the main with loft and expansive additional 3429 sq ft living space lower for over 7291 sq ft of luxury living space. The main floor features a spacious primary retreat with a sitting area, a luxurious 5-piece ensuite, and a walk-in closet. A private den with built-in shelving and a cozy gas stove provides the perfect work-from-home space. Soaring ceilings highlight the dramatic great room with a two-way stone gas fireplace, while the formal dining area and gourmet kitchen with granite counters, stainless steel appliances, an island eating bar, and bright breakfast nook, set the stage for elegant entertaining. A convenient main-level laundry room, rich walnut



hardwood, and numerous upgrades, including a new asphalt shingle roof (2023) and argon-filled window add to the home's appeal. The walkout level is designed for entertainment and relaxation, offering three additional bedrooms, a family room, a games area, a wet bar, a wine collector's dream cellar with its own sink, a home theatre, and a gym. An elegant hourglass staircase connects the spaces seamlessly. Upstairs, a loft provides the perfect flex space for a second office, reading nook, or creative retreat with views. Comfort is ensured year-round with central air conditioning, forced air, and in-floor heating. Families will appreciate the location with school bus route for Springbank Elementary, Middle, and High Schools all ranked in the top 5% of Alberta schools (Fraser Institute 2024). The property is also close to prestigious private schools including The Edge, Webber, and Rundle Academies. Water is supplied by Westridge Water with fire hydrant service for peace of mind. This remarkable property combines privacy, natural beauty, and luxury living for truly a rare opportunity in Springbank!

Built in 1999

Essential Information

MLS® #	A2257341
Price	\$2,575,000
Bedrooms	4
Bathrooms	5.00
Full Baths	4
Half Baths	1
Square Footage	3,862
Acres	3.81
Year Built	1999
Type	Residential
Sub-Type	Detached

Style	Acreage with Residence, Bungalow
Status	Active

Community Information

Address	11 Spring Ridge Estates
Subdivision	Springbank
City	Rural Rocky View County
County	Rocky View County
Province	Alberta
Postal Code	T3Z3M8

Amenities

Parking Spaces	6
Parking	Asphalt, Front Drive, Garage Door Opener, Heated Garage, Oversized, Triple Garage Attached, Triple Garage Detached, 220 Volt Wiring, Driveway, Insulated, Workshop in Garage
# of Garages	6
Waterfront	Pond, See Remarks

Interior

Interior Features	Bookcases, High Ceilings, No Smoking Home, Vaulted Ceiling(s), Walk-In Closet(s), Wet Bar, Wired for Sound
Appliances	Central Air Conditioner, Dishwasher, Dryer, Garage Control(s), Garburator, Microwave, Refrigerator, Washer, Water Softener, Window Coverings, Bar Fridge, Double Oven, Gas Cooktop, Humidifier
Heating	In Floor, Forced Air, Natural Gas
Cooling	Central Air
Fireplace	Yes
# of Fireplaces	3
Fireplaces	Family Room, Gas, Wood Burning, Blower Fan, Den, Double Sided, Glass Doors, Great Room, Kitchen, Stone
Has Basement	Yes
Basement	Finished, Full, Walk-Out

Exterior

Exterior Features	Balcony, BBQ gas line, Private Entrance, Private Yard
Lot Description	Cul-De-Sac, Gentle Sloping, Landscaped, Many Trees, Private, Rectangular Lot, Treed, Views
Roof	Asphalt Shingle
Construction	Stucco

Foundation Poured Concrete

Additional Information

Date Listed September 16th, 2025

Days on Market 1

Zoning R-RUR

Listing Details

Listing Office Century 21 Bamber Realty LTD.

Data is supplied by Pillar 9â„¢ MLS® System. Pillar 9â„¢ is the owner of the copyright in its MLS® System. Data is deemed reliable but is not guaranteed accurate by Pillar 9â„¢. The trademarks MLS®, Multiple Listing Service® and the associated logos are owned by The Canadian Real Estate Association (CREA) and identify the quality of services provided by real estate professionals who are members of CREA. Used under license.